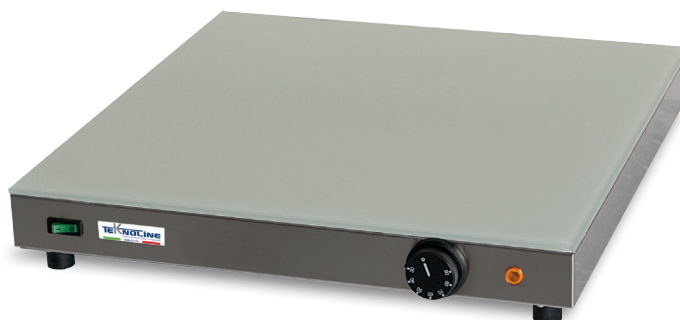
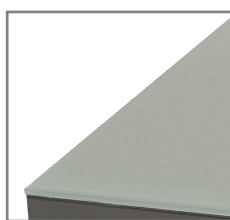


PCV50



PIANO CALDO WARMING PLATE | PCV50

Piano caldo di produzione Italiana. Struttura realizzata in acciaio inox. Piano caldo in vetro temperato. Piedini in gomma. Termostato di regolazione con temperatura massima di 110°. Prodotto certificato CE.

Warming plate Italian production. Structure made of stainless steel. Hot tempered glass. Rubber feet. Control thermostat with maximum temperature of 110°. CE certified product.

 Made in Italy

ELETTRICO
ELECTRIC 

CERTIFICATO
CERTIFIED 

Potenza watt Power watt	600
Alimentazione Power supply	230/1N/50-60
Dimensioni (mm) Dimensions (mm)	500x500x70h
Peso netto (kg) Net weight (kg)	7,10
Peso lordo (kg) Gross weight (kg)	8,10
Dimensioni imballo (cm) Packing dimensions (cm)	60x60x15h